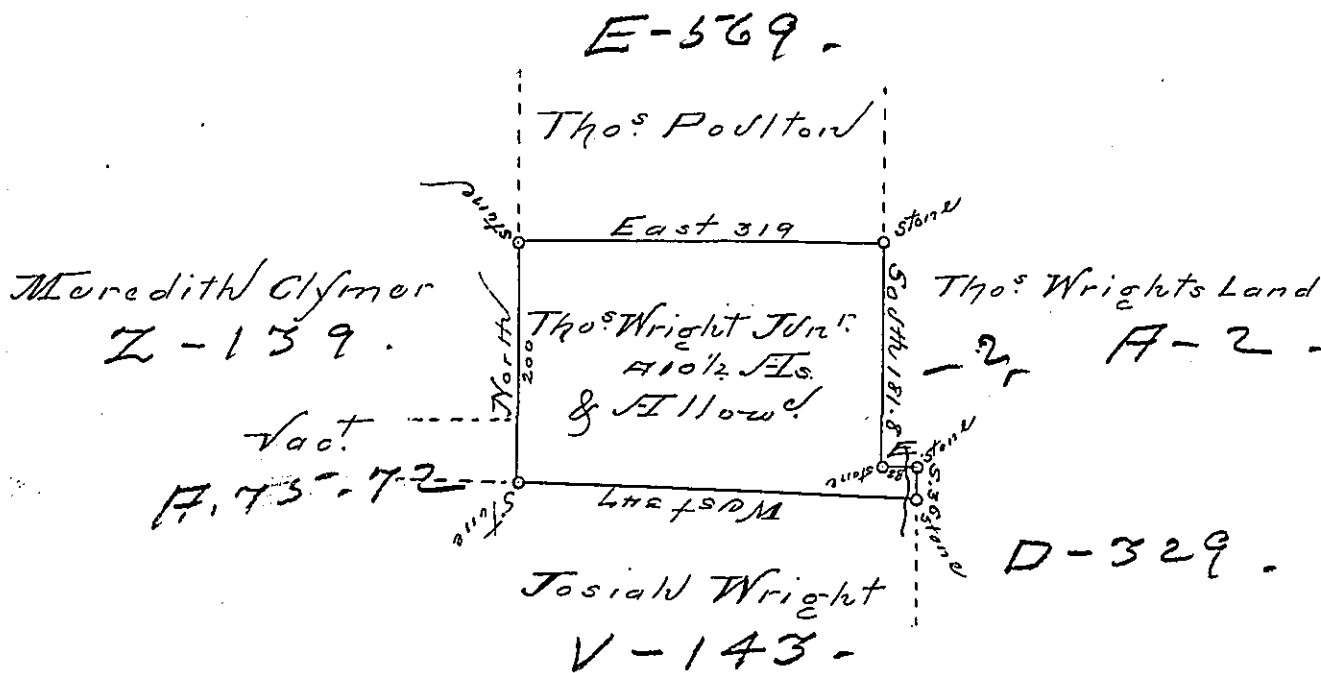


Foster-  
Luzette.



Draft of a tract of land called  
 Situate on the waters of Lehi joining land Surveyed  
 for Josiah Wright and others in the County of Luzerne  
 containing four hundred and ten acres 1/2 and  
 allowance of six P. Cent for roads &c  
 Surveyed for Thos Wright Junr the 16<sup>th</sup> Day of  
 June 1792 in pursuance of a Warrant dated  
 the 14<sup>th</sup> Day of April 1792  
 To  
 Daniel Brodhead Esq } by Wm Gray Esq  
 Suror. Genl.

IN TESTIMONY that the above is a copy of the original remaining on file in the  
 Department of Internal Affairs of Pennsylvania, made con-  
 formably to an Act of Assembly approved the 16th day of  
 February, 1833, I have hereunto set my Hand and caused  
 the Seal of said Department to be affixed at Harrisburg, this

— twentieth — day of — February — 1895  
 Isaac B. Brown  
 Secretary of Internal Affairs.